

Installation for Universal Mower Canopy with ROPS

Part Number: 3641S

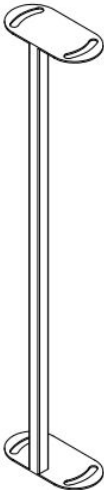
Patent Number: US 10,053,158 B1



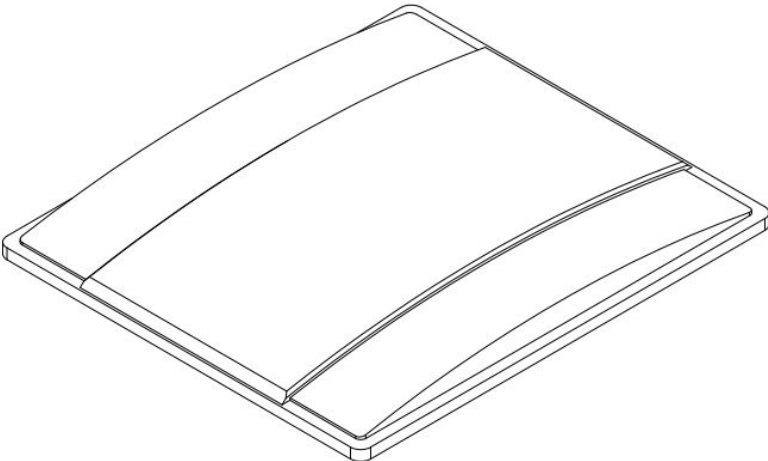
Installation Time: 20 minutes

ALWAYS REMOVE THE CANOPY BEFORE TRANSPORTATION

Hardware Kit for 3641S

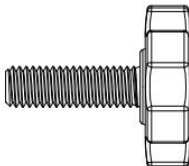
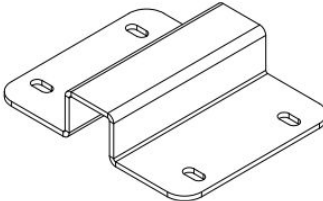


Crossbar (3641CB)



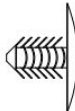
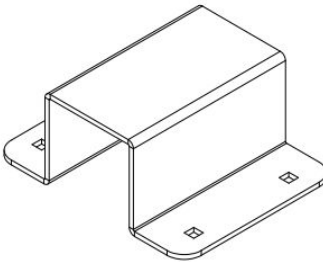
Mower Canopy Top

2-1" Top Bar Bracket (3641-1)



4-Plastic Thumb Screws

2-2" ROPS Bracket (3641S-2)

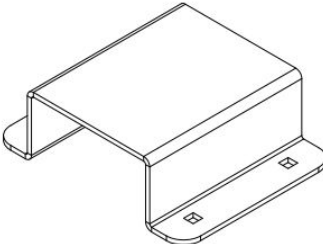


2-Black Plugs



8-1/4"-20-1" Carriage Bolts

2-3" ROPS Bracket (3641S-3)



8-1/4"-20 Lock Nuts



4-3/8" Seal Washers

Tools Required for Assembly: 7/16" ratchet, hand tighten do not use power tools

1. Line up the crossbar to be centered on top of the ROPS as shown in the picture below.



2. Use the top bar brackets and the corresponding ROPS bracket to fix the crossbar in place. Make sure the brackets are spaced evenly, then tighten them with the carriage bolts and lock nuts. Be sure to tighten them evenly and not to bend the top brackets.



3. Align the holes in the canopy top with the slots on the crossbar to fit either the forward or aft position.



4. Place the washers in between the thumb screws and the end plates on the crossbar then secure the canopy. Then place the plugs in the open holes in the canopy top.



The canopy can be removed from the crossbar and the ROPS can fold down. The crossbar will not get in the way and does not need to be removed.



ALWAYS REMOVE THE CANOPY BEFORE TRANSPORTATION